

PaC-LIGHT UPGRADE

A control package for old Paternosters

PaC-Light control upgrade package has been developed to upgrade old vertical carousel control systems. Initially created to upgrade Constructor Group machines, however it can also be installed on other manufacturer's vertical carousels.

Many Paternosters delivered in the past decades are mechanically still in a good shape, but the electrical parts and control systems may be reaching the end of their life. Spare parts maybe difficult to get, expensive, or no longer available, and the technology itself is outdated.

With the PaC-Light upgrade package these old Paternosters can be updated to today's technology and secures a second life for these older machines, with the added benefit of updating the safety features to meet today's regulations.

Installation of the PaC-Light control package normally takes one workday, so the daily operations at the Paternoster are not interrupted for a long period.



Existing Paternoster suitable for a PaC-Light upgrade

BENEFITS OF A PAC-LIGHT UPGRADE

- Upgrade your old machine with the newest software and functionality
- Meets today's safety regulations with minor investments
- Minimal interruption to daily operations
- Optimizes performance of your old machine
- Secure the availability of spare parts for future years





More user friendly functionality

PaC-Light control update package includes:

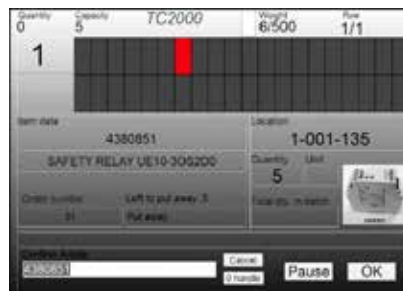
- New electrical cabinet
- Safety light curtains for the picking opening for personal safety
- 2 photoelectric sensors for product safety (top and bottom security in the opening)
- Color touch screen display
- TC2000 WMS interface protocol included

Options:

- TC2000 article management software
- Label printers
- Barcode scanner
- Connection interface to ERP



Pac-Light easily integrates with TC2000 article management software



Quick and easy to locate articles



The PaC-Light Upgrade Control System is CE marked and meets today's safety regulations. It does not change the possible existing CE mark on the machine.

Good to know about CE marking and EU safety regulations

Before 1993 produced storage machines

- If machine is delivered earlier than 1993, it is the customer responsibility to upgrade the safety system. This is based on EU Directive 89/655/EEC "minimum safety and healthy requirements for the use of workers"

1993-1995

- During this time period (transition period) it was allowed but not required to have a CE mark
- No CE marking existing in general

1995-2010

- CE marking was required
- Risk analysis were only a recommendation for CE marking

2010

- CE marking is required
- Risk analysis and reliability calculation (e.g. Sistema) are required for CE marking

Constructor Finland Oy
 Kasteninkatu 1, P.O. Box 100
 FI-08151 Lohja
 Tel: +358 19 36251
 Fax: +358 19 3625 333
 sales@kasten.fi

www.kasten-storage.com

A Member of the Constructor Group

